



**GPAI** / THE GLOBAL PARTNERSHIP  
ON ARTIFICIAL INTELLIGENCE

11-12 NOVEMBER 2021 PARIS

9h-10h

# INNOVATION AND COMMERCIALIZATION WORKING GROUP

---

**Yann Dietrich**  
Atos, France

**Jean-François Gagné**   
ServiceNow, Canada

**Ingo Hoffman**  
AI Hamburg, ADI Innovation AG, Germany

**Laurence Liew**   
AI Singapore, Singapore

**Inma Martinez**  
Independent Expert in industrial  
and societal digital transformation,  
Spain

**Hiroshi Maruyama**   
Preferred Networks, Inc., University of Tokyo,  
Kao Corporation, Japan

**Françoise Soulié**  
Hub France IA, France

# Scope of the I&C Working Group

## Mandate

The Innovation and Commercialization Working Group will study and recommend tools and methods for driving international collaboration on AI R&D and innovation, for advancing research results into products and processes, and for transferring these results to industry, with a special focus on SMEs.

It will examine support measures to facilitate these advances, including standards and norms, self-certification etc.

## Co-chairs



**Jean-François Gagné,**  
VP of AI Strategy and Product  
Management, ServiceNow (Canada)



**Francoise Soulié-Fogelman,**  
Scientific Advisor at Hub France IA (France)



## I&C Experts collectively chose to carry out two concrete projects in 2021, focusing on SMEs

### **1 – Broad Adoption of SMEs**

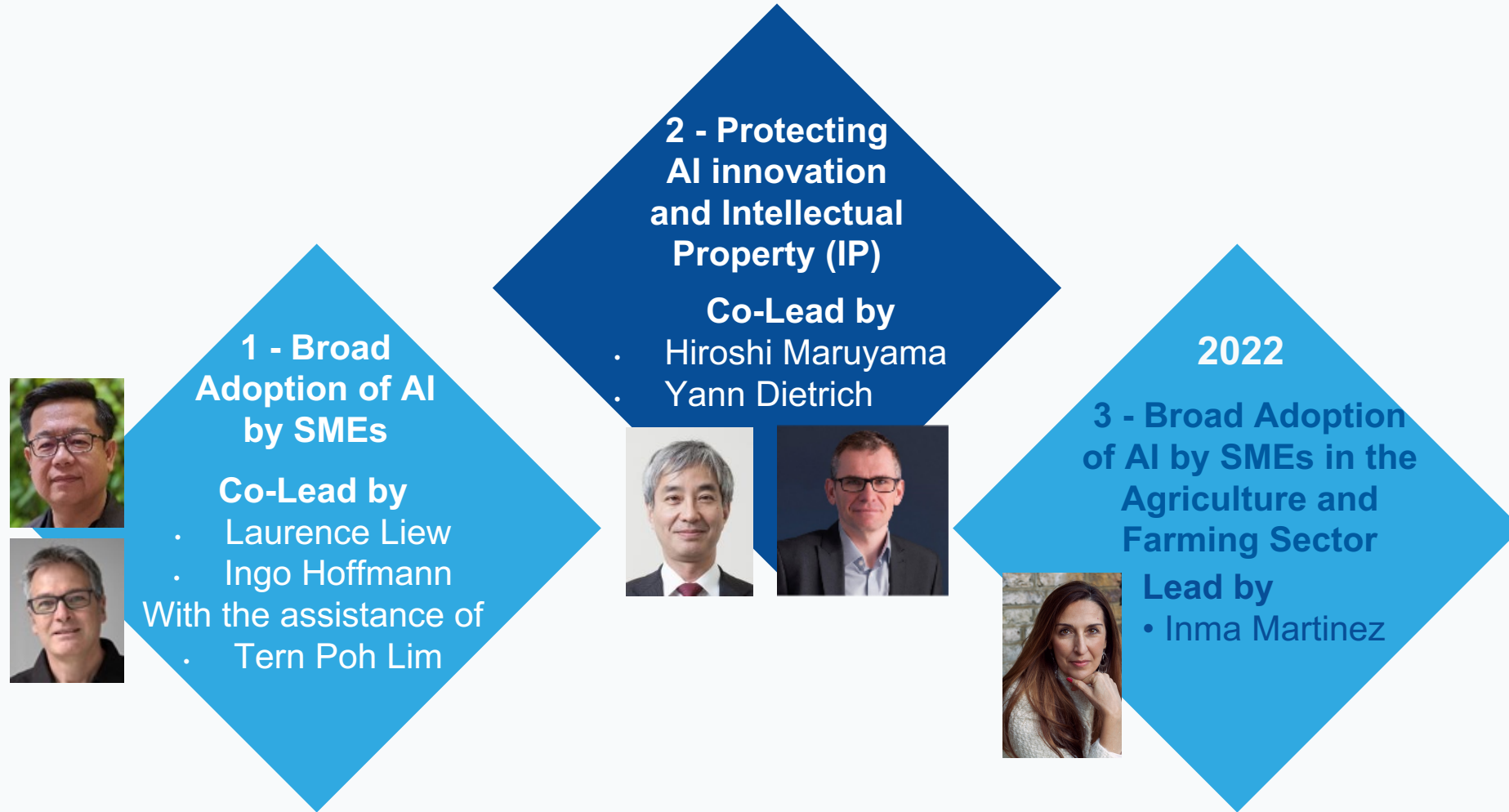
The SMEs Committee seeks to support SMEs to adopt AI which will help them increase their competitiveness and ensure that their workforce will continue to be economically relevant.

### **2 - Protecting AI innovation & Intellectual Property (IP)**

The IP Committee's main objective is to support startups and SMEs in achieving a deeper understanding of the challenges they face in the area of IP as it relates to AI.



Hence, two separate committees were created, and Experts/Observers were invited to join In 2022, a third committee will be started





# 01

**Broad Adoption  
of AI by SMEs**



SMEs' share of jobs

80%

GNP contribution

70%

## SMEs face challenges with:

Resources  
Skills  
Data  
IT infrastructure

Matching SMEs  
to AI Providers

## Increase the AI Maturity of SMEs

Edu resources,  
outreach and AI Index

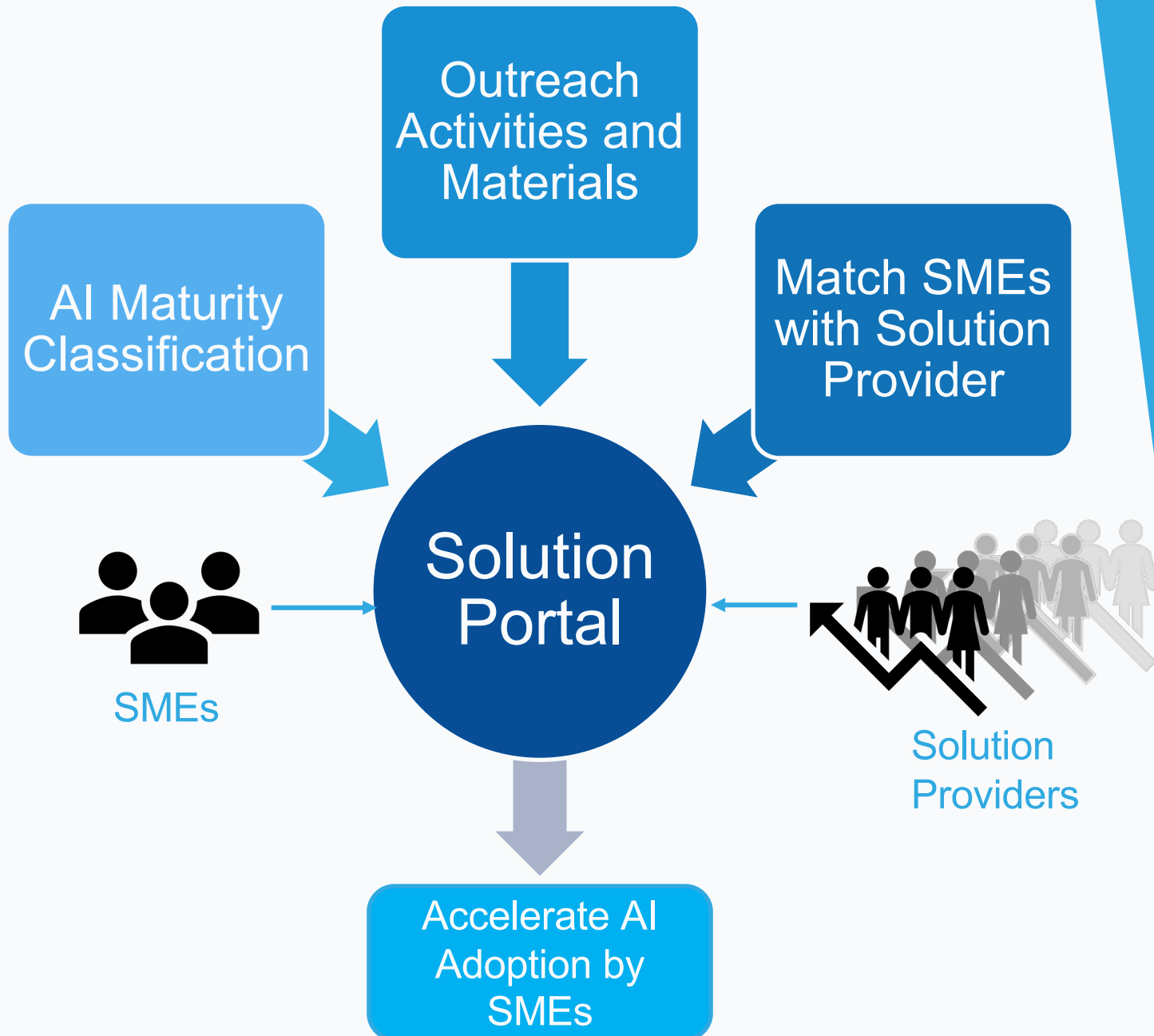


**GPAI**

THE GLOBAL PARTNERSHIP  
ON ARTIFICIAL INTELLIGENCE

# Overview of SME Committee's Objectives & Activities

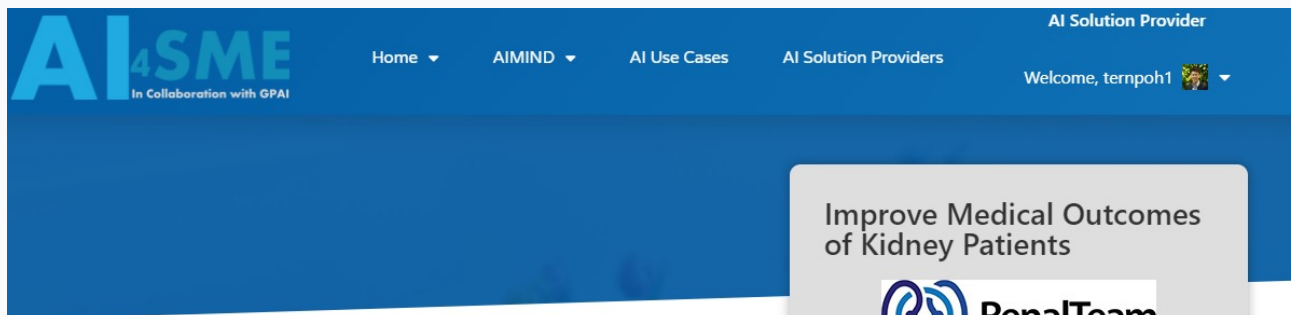
SMEs represent a large part of our economies, and these organizations must be supported now to adopt AI and stay relevant.



# Overview of SMEs Solution Portal

The solution portal integrates all key activities and serves as a single reference for SMEs looking to adopt AI





## Business challenges

How can RenalTeam systematically and accurately predict which hemodialysis patient will be hospitalised within the next week?

### Improve Medical Outcomes of Kidney Patients



AI Maturity Suitability: AI Ready

Duration (months): 9

Implementation Cost: \$100,000 to \$250,000

Total Funding Amount: 25% to 50%

Eligible for Funding: Government Funding

Enquire now

### Required data to complete the AI project

Patients' dialysis data

### Required in-house IT and/or domain expertise

Software Engineers to deploy and integrate AI-solution into existing company's products

### Regulatory compliance or standards

Compliant with relevant local regulations and guidelines on using AI for healthcare



**GPAI**

THE GLOBAL PARTNERSHIP  
ON ARTIFICIAL INTELLIGENCE

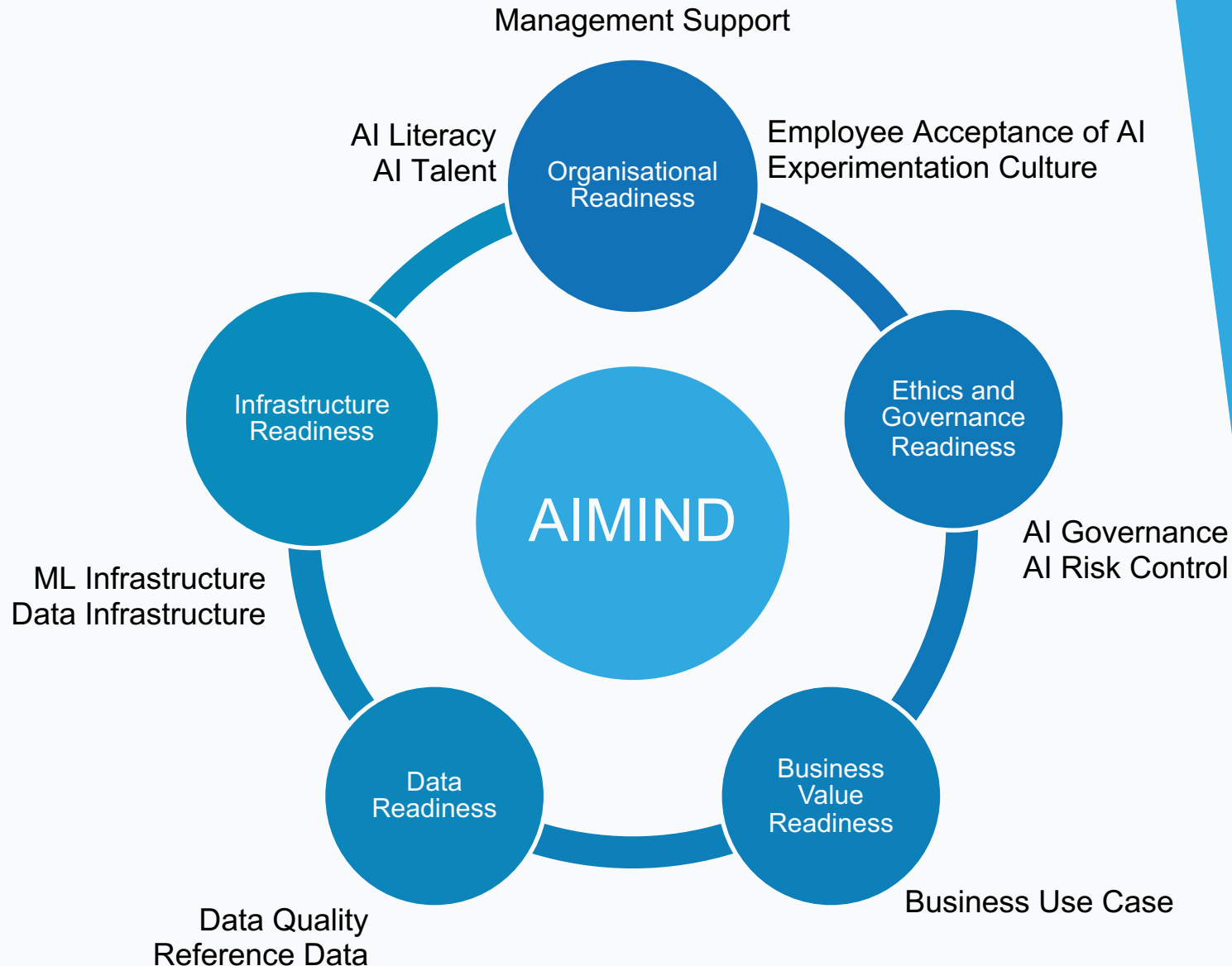
# Success Stories

Success stories format integrates best practices and experience among member states to facilitate adoption



# GPAI AI Maturity Index for SMEs (AIMIND)

AIMIND enables SMEs to identify their AI readiness and find appropriate approach to adopt AI based on their AI maturity



# AIMIND Assessment Result

AIMIND classifies the organisation into one of four categories, each with recommendations on best approach for AI adoption

## AIMIND Assessment Result: Your Organisation is AI Aware

Organisations that fall within the same AIRI category tend to exhibit similar capabilities and characteristics: Table 2 below illustrates the common capabilities, characteristics, and AI adoption suitability for organisations in each category of AI readiness.

	AI Unaware	AI Aware	AI Ready	AI Competent
Average Score	Less than 1	1 to 1.9	2 to 2.5	More than 2.5
General Capabilities	Might hear about AI but is unaware of applications	Savvy consumers of AI solutions. Capable of identifying use cases for AI applications	Capable of integrating pre-trained AI model into products or business processes	Capable of developing customized AI solutions for specific business needs
General Characteristics	Wait for vendors to convince use cases and business value of AI	Identified potential use cases and seek AI solutions from vendors	Evaluated viability of pre-trained AI models	Developed roadmap for AI implementation
AI Adoption Suitability	Consume ready-made, end-to-end AI solutions		Integrate pre-trained AI models and solutions for common AI applications	Develop customized AI model for unique business needs

## Interpretation of AIMIND Result

It is a common misconception that AI adoption is only suitable for larger or technology-based organisations. On the contrary, AI Unaware and AI Aware organisations, even if they lack data, talent, or ML infrastructure, could adopt ready-made AI solutions for their core or peripheral business activities. For instance, an AI Unaware or AI Aware law firm could implement a chatbot on its website to help answer queries from clients. The critical difference is that AI Aware organisations could identify better AI use cases, procure relevant AI solutions, and potentially benefit more from AI adoption.

# Video Demonstration of Solution Portal

**Disclaimers:** The solution portal is a template that member countries could adopt and operate. GPAI will not be operating the solution portal.

Each member state will adopt and localise the platform based on its own economy and requirements

The Portal will be further developed in 2022

- Conduct field tests of the platform
- Develop an AI readiness index for AI solution providers (quality assessment for listing on our platform)
- Develop a governance framework for the platform
  - Set access conditions
  - Work on security & data protection

---

**The portal will be made available  
for GPAI member states**

## Future Developments

The Committee will further develop the Portal to drive our objectives forward

# 02

## Protecting AI innovation and Intellectual Property (IP)



# IP Committee at a Glance

## Objective

To achieve a deeper understanding of the challenges that organizations face in the area of IP as it relates to AI

 **2021 Achievements**

- 
- Current effective IP laws
  - Best practices, activities, and mechanisms related to IP
  - How individual organizations are currently handling IP
  - What the differences are across geographies

 **2022 Plans**



## 2021 Achievements

### ***GPAI IP Primer***

The IP Primer is a short guide for helping startup companies and SMEs that develop and use AI technologies manage their intellectual property.

### **Case Studies**

The case studies consisted of a series of interviews with AI startup companies around the world to assess the usefulness of *GPAI AI Primer*.





# GPAI IP Primer

Main Body Covers  
Various Aspects  
of IP in AI

Disclaimer .....
Introduction .....
1. What is Intellectual Property (IP)? .....
1.1. A brief overview of the various forms of intellectual property rights .....
1.1.1. Patent .....
1.1.2. Copyright .....
1.1.3. Trade Secret .....
1.1.4. Protection of Data .....
1.2. What are the benefits of intellectual property rights? .....
1.3. Why intellectual property rights matter .....
1.4. Resources .....
2. IP Issues in AI .....
2.1. How does it work? .....
2.2. A closer look at AI work products .....
2.3. The challenges of AI in IP .....
2.4. Resources .....
3. Difference Between Jurisdictions .....
3.1. Outline of different jurisdictions .....
3.2. Differences by jurisdictions (the European Union, the United States, Canada, and Japan) .....
3.3. Resources .....
4. IP Management for SMEs .....
4.1. Understand your business .....
4.2. Setting your IP strategy .....
4.3. Execute .....
4.3.1. Create the team .....
4.3.2. Optimize IP-related Costs .....
4.4. Resources .....
5. FAQ for Entrepreneurs in AI .....



# GPAI IP Primer

Annex. Table is on Jurisdictional Comparison

Table 1 - Patents			
1 - Requirements			
EU	US	Canada	Japan
One can either file a patent at a national patent office, or at the European Patent Office (EPO).	<p>Inventions must be novel and non-obvious, as well as not "directed to a judicial exception" "without significantly more".</p> <p>Approach to subject matter has evolved through substantial case law (notably <i>Diamond v Diehr</i>; <i>Alice Corp. v CLS Bank</i>; <i>Mayo v Prometheus Labs</i>, among others).</p>	Inventions must be novel and non-obvious, and have a "discernible physical effect" (beyond "mere calculation").	<p>Inventions need to have "novelty" (meaning, objectively something new based on the date and time when the applicant filed the patent application with the Japan Patent Office), and be "advanced".</p> <p>In the case of computer programs, it is sometimes disputed whether or not they "utilize the laws of nature." Since "invention" is the creation of technical ideas that "utilize natural laws," it is clear on whether mere abstract and artificially decided concepts fall under the category of the creation of technical ideas that "utilize natural laws."</p>



# Case Studies

## Companies Interviewed

1. ALEIA (France)
2. Hasty.ai (Germany)
3. minoHealth AI Labs (Ghana)
4. Neural Pocket, Inc. (Japan)
5. Noodle Factory (Singapore)
6. Startupindonesia.co (Indonesia)
7. Synerise (Poland)
8. SYSPIA (France)

## Major Findings

- IP strategy varies depending on the situation
- Use of open-source technologies is a major concern
- Reuse of pre-trained models is a big unknown from the AI point of view
- More jurisdictions coverage is needed
- These findings will be incorporated in the next version of the *IP Primer*

---

**The GPAI IP Primer is welcomed very favorably: Average 8.1  
out of 0-10 scale (0: useless, 10: most useful)**



## In 2022, the IP Committee plans on...

- Enriching the debate at an expert level with an *IP Expert*.
- Understanding the **IP implications around data and AI** of the very significant work done by the EU with various legislations in preparation/review such as the *Data Governance Act*, *Data Act*, *Database Directive*, in addition to other legislations around the world.
- Exploring a **pattern of clauses of framework data access, sharing and flows** for implementing it to free trade agreements, electronic trade rules under WTO, and/or transnational regional agreements among like-minded partners.
- Producing key recommendations for the **harmonization of rules** and mutual recognition of patenting computer-implemented AI inventions.
- Identify and summarize the **key IP issues** for further consideration by experts.
- Conducting **case studies** to get feedback about the GPAI *IP Expert*.

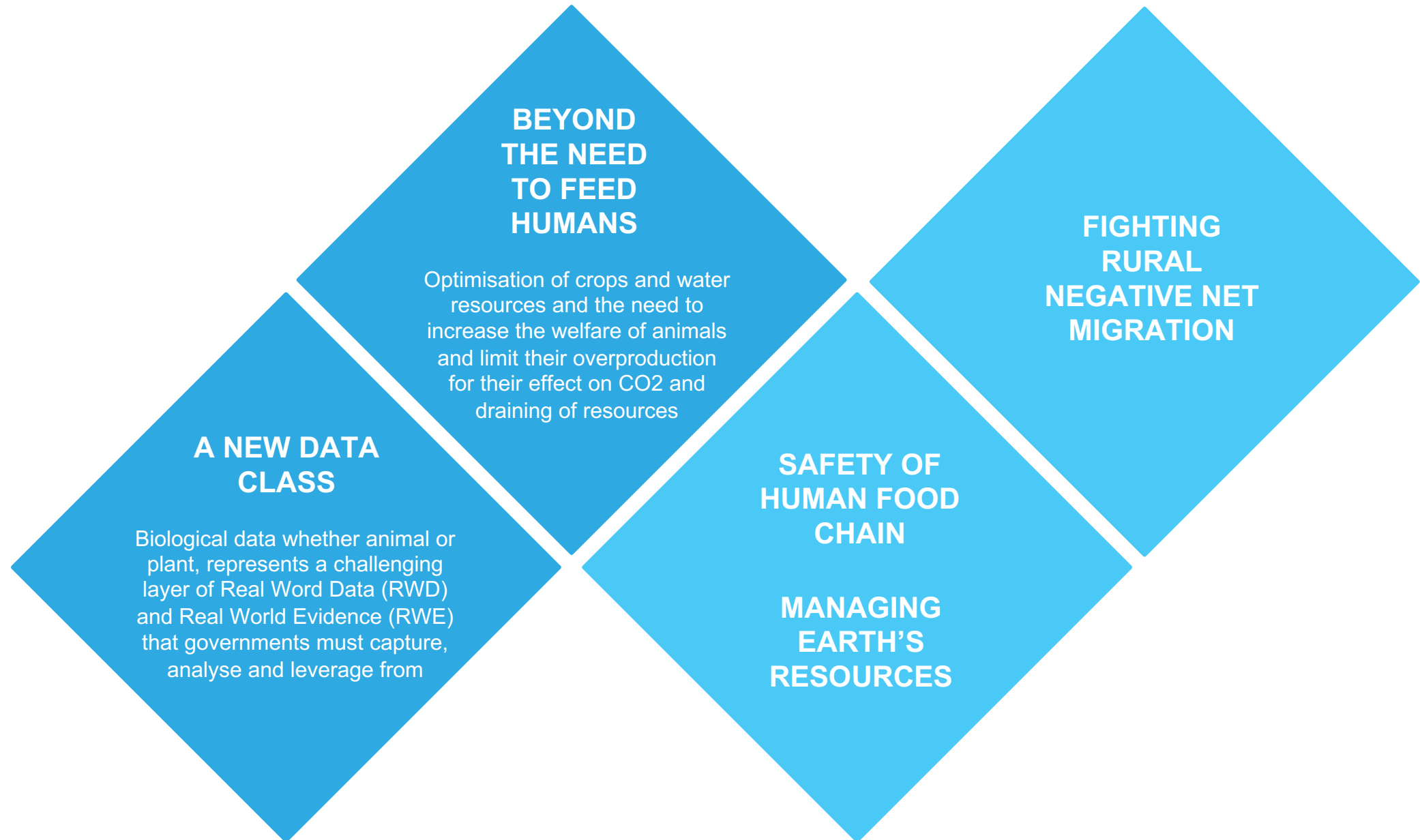


# 03

## **Broad Adoption of AI by SMEs in the Agriculture and Farming Sector**



# Adapting AI to the Agriculture & Farming – Requirements for Adoption





# Addressing the two main challenges:

## 1) standardization 2) improvement of business models

*AI allows the A&F sector respond better and less costly to market competitive dynamics, and address consumer expectations*

### DETECTION & PRECISION

**Detection** : chronic pain and gait disorders in animals, poor plant nutrition, pest control via drones & satellite data; irrigation leaks

**Precision** : feeding programs; crop harvesting & yield; utilization of water resources for both crops and animal cooling; pest control; monitoring individual animal growth, health and welfare

### OPTIMISATION & PREDICTION

**Optimization** : dairy cows; best time to harvest crops; best use of biodegradable pesticides

**Prediction** : illness in cattle, especially dairy cows; preventing overapplication of herbicides; price forecasting of crops based on yield rates.

### TRACING & TRACKING

*of crops and animal products into the human food chain.*





# Creating a Path to Success and a Repository of Resources for the Agriculture & Farming Sector

Nurturing an “all encompassing” ecosystem of A&F companies, associations and the AI and technology providers in order to build a cornerstone for the foundations of each GPAI member country and its own local initiatives:

## 1. « Awareness » phase

Outreach initiatives to engage AI-Aware A&F ecosystem members and create co-operation and collaboration for the project

## 2. “Accessibility” phase

Build a catalogue of successful AI solutions by verticals and commercial objectives

## 3. “Resources” phase

- Build a Portal/Resources Website for the A&F SMEs
  - to access information libraries ranging from a variety of themes (“AI Readiness”, “AI Best Practices” “How to Digitize your Farm”),
  - as well as downloadable generically trained algorithms used in basic A&F AI projects.
- Compile a library of AI companies dedicated to A&F projects and information about publicly available A&F data from local sources.

**The A&F Portal will reuse the structure of the “SME” Portal built in Year 1**





**GPAI**

PARIS SUMMIT 2021

# Forward Look

# In 2022, the Innovation & Commercialization Group will continue its work with 3 projects

## Follow-up

- Broad Adoption of AI by SMEs
- Protecting AI innovation, Intellectual Property (IP)

## New

- Broad Adoption of AI by SMEs in the Agriculture and Farming Sector

Projects will maximize collaboration with the other GPAI Working Groups by sharing information and best practices.





**GPAI**

THE GLOBAL PARTNERSHIP  
ON ARTIFICIAL INTELLIGENCE

# Questions & Answers ?